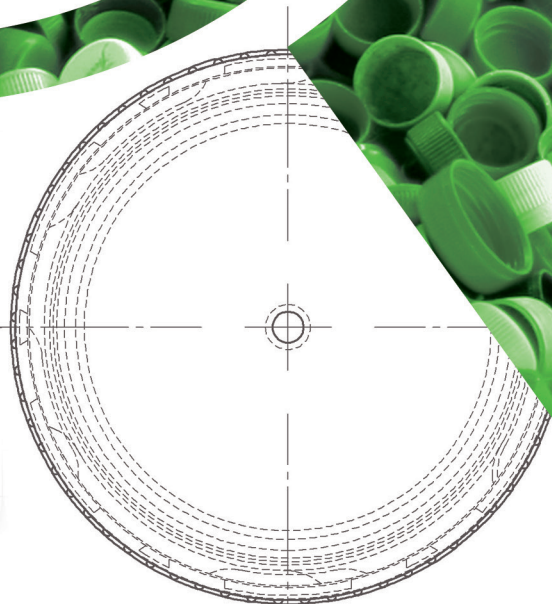
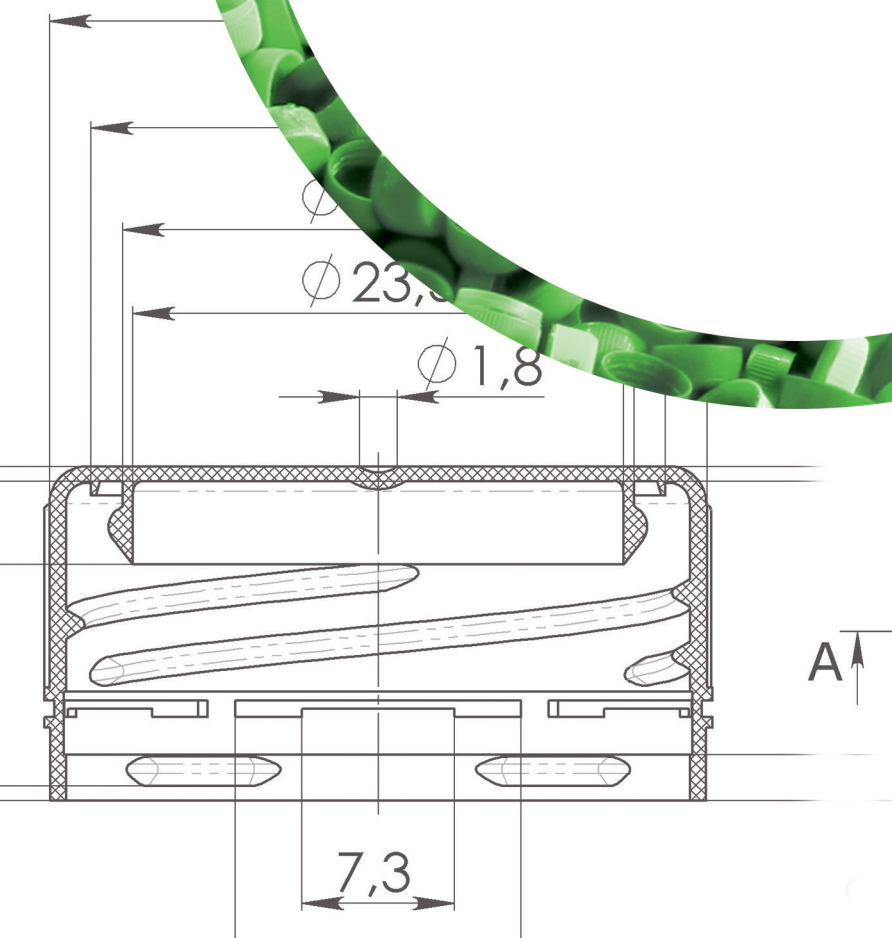


**osmor**

# PRODUCT CATALOG





## FOOD & BEVERAGES

---

From condiments to sauces and to water caps we provide several solutions to protect your food and beverage products. Beside this, we offer a wide range of handles and accessories as well to meet all your packaging needs.

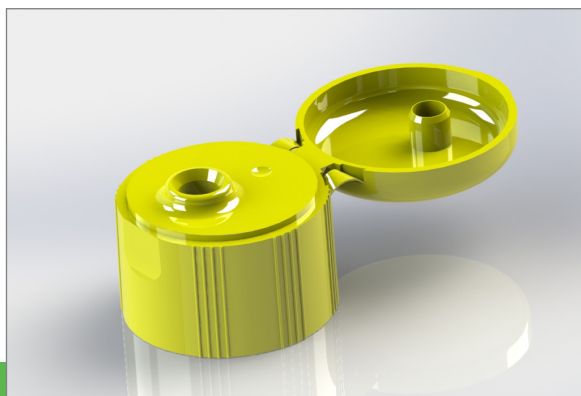
## Product



## Specifications

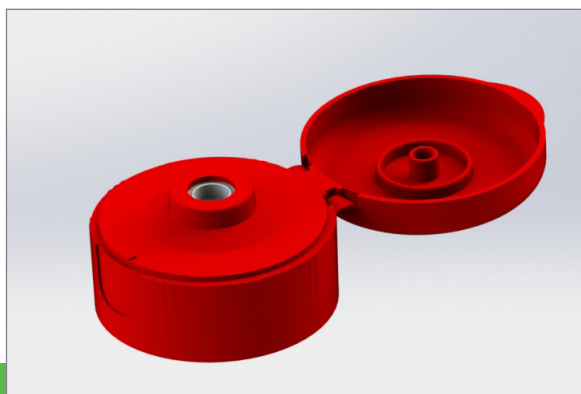
Size: 38 mm  
Type: screw cap, with 3 different inserts  
Bottle: PET  
Material: PP  
Seal: various liners

**Z 38 Z**



Size: 28 mm  
Type: screw cap  
Bottle: PET, PE  
Material: PP  
Seal: plug seal or induction liner

**Z 28 BT FLIP TOP**



Size: 38 mm  
Type: screw cap with or without silicone valve  
Bottle: PET  
Material: PP  
Seal: induction liner (cap without valve)

**Z 38 KS FLIP TOP**

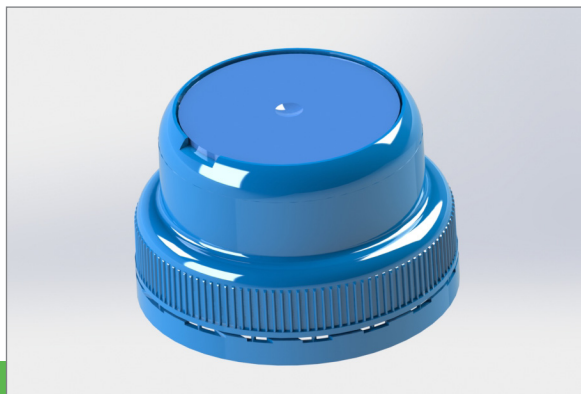


Size: 64 mm  
Type: screw cap  
Bottle: PET  
Material: PP  
Seal: various liners

**Z 64 Z**

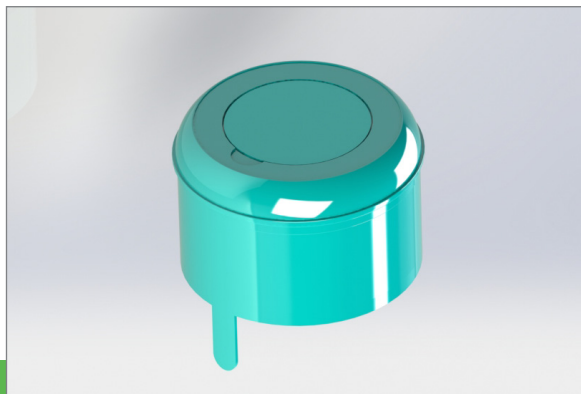
## Product

## Specifications



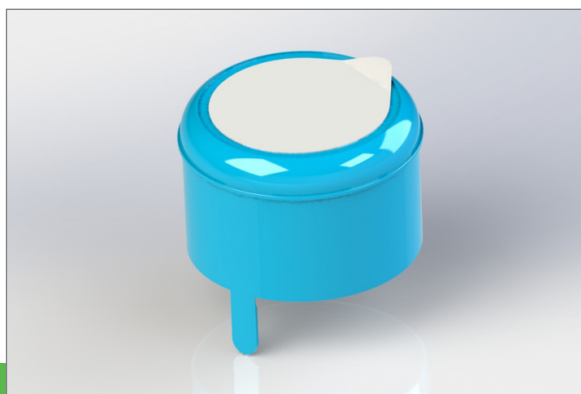
Size: 48 mm  
Type: screw cap  
Bottle: PET with triple start thread  
Material: HDPE  
Seal: plug seal  
Tamper evident function

### ZC 48 COOLER



Size: 55 mm  
Type: snap cap with membrane  
Bottle: PC without thread  
Material: LDPE  
Seal: with or without EPE liner  
Tamper evident function

### NA 55 M

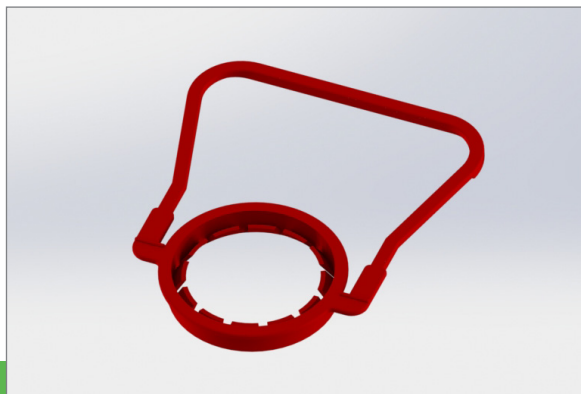


Size: 55 mm  
Type: snap cap with foil  
Bottle: PC without thread  
Material: LDPE  
Seal: with or without EPE liner  
Tamper evident function

### NA 55 F

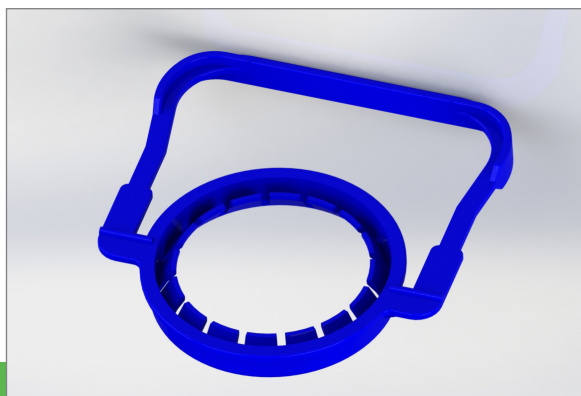
## Product

## Specifications



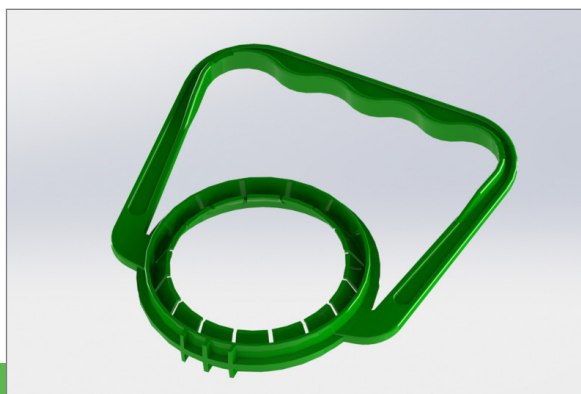
Size: 28 mm  
Type: handle for 2 liter PET bottles  
Material: HDPE

**RU 28 2 L**



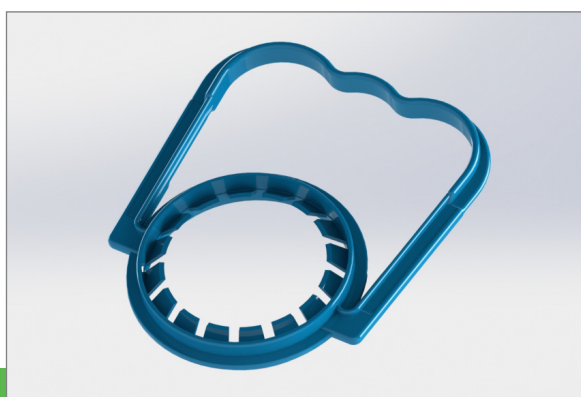
Size: 48 mm  
Type: handle for 5-8 liter PET bottles  
Material: HDPE

**RU 48 5 L**



Size: 48 mm  
Type: handle for 10 liter PET bottles  
Material: HDPE

**RU 48 10 L**



Size: 48 mm  
Type: handle for 5-10 liter PET bottles  
Material: HDPE

**RU 48 10 L KM**

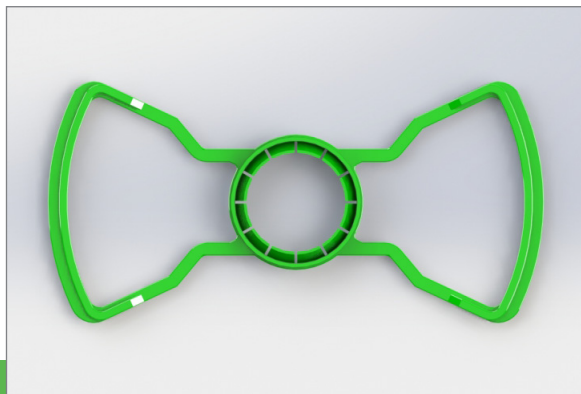
## Product

## Specifications



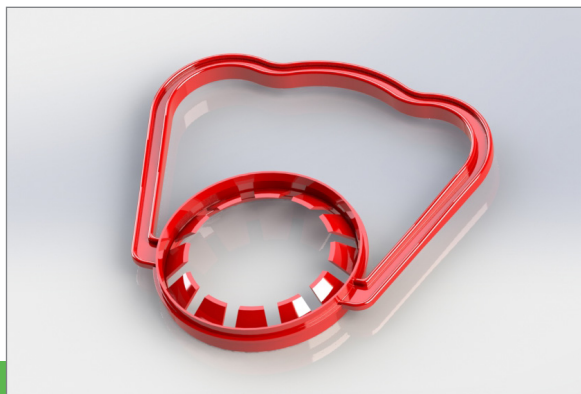
Size: 48 mm  
Type: handle for 5-10 liter PET bottles  
Material: HDPE

**RU 48 5 L MIN**



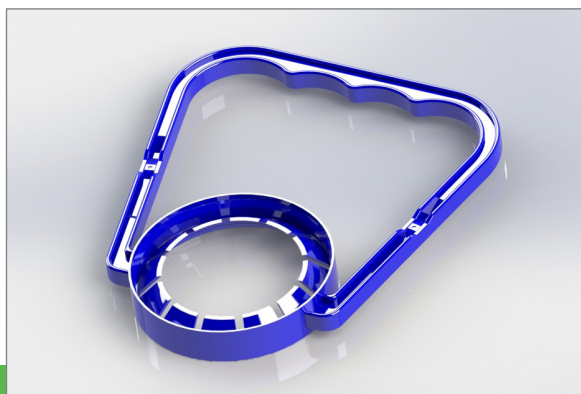
Size: 48 mm  
Type: handle for 10 liter PET bottles  
Material: HDPE

**RU 48 10 L COOLER**



Size: 38 mm  
Type: handle for 5-8 liter PET bottles  
Material: HDPE

**RU 38 5 L**

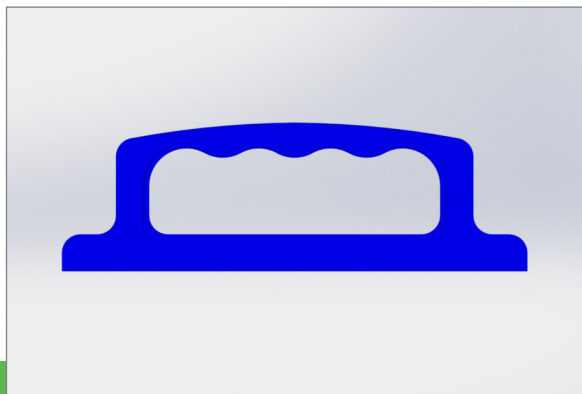


Size: 38 mm  
Type: handle for 5-8 liter PET bottles  
Material: HDPE

**RU 38 5 L KM**

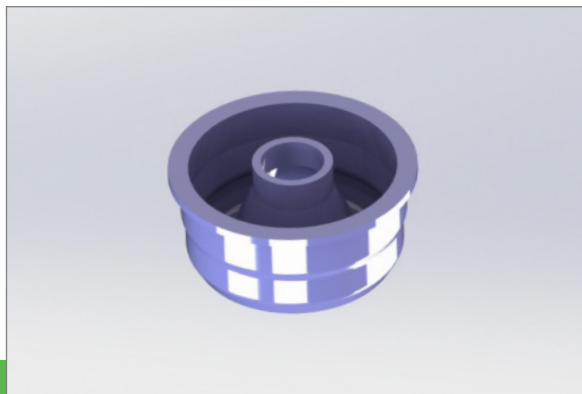
## Product

## Specifications



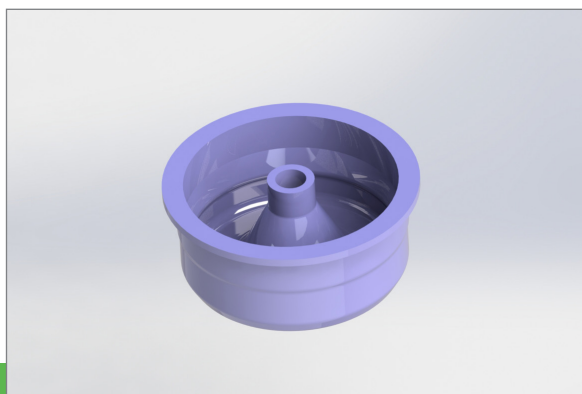
Type: handle for paper bags  
Material: HDPE

### RU PAPER



Size: 28 mm (DIN 28)  
Hole diameter: 6 mm  
Type: snap on  
Bottle: glass  
Material: LDPE

### INNER PLUG MC 60

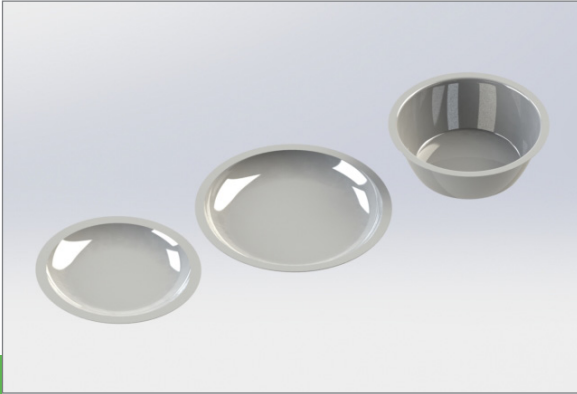


Size: 28 mm  
Hole diameter: 3 mm / 3,5 mm / SL (blind)  
Type: snap on  
Bottle: PET, HDPE, PP  
Material: LDPE

### INNER PLUG MC 30 / 35 / SL

## Product

## Specifications



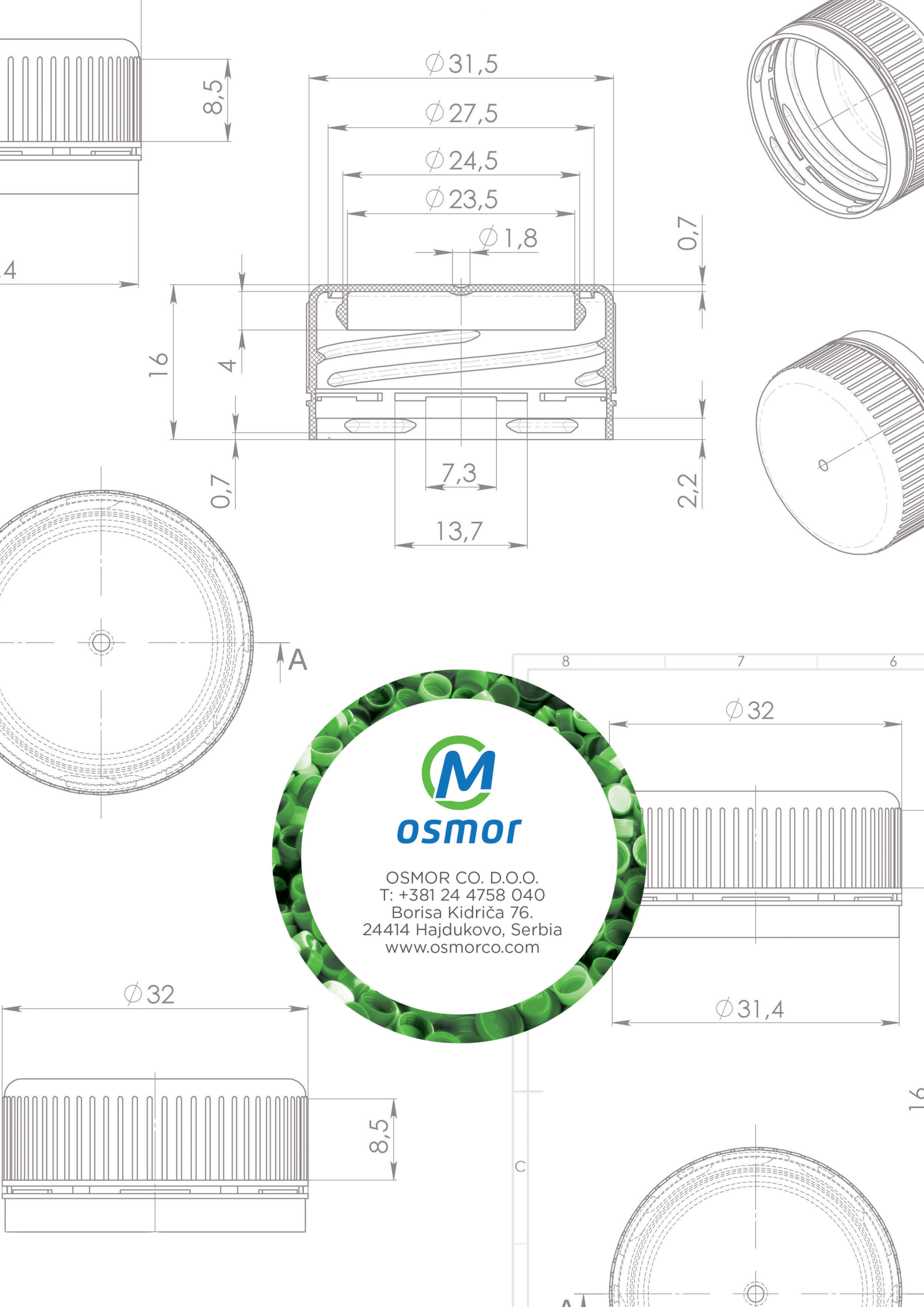
Material: PLA (biodegradable plastic)

### PLA PLATES



Material: PLA (biodegradable plastic)

### PLA CUTLERIES



**osmor**

OSMOR CO. D.O.O.  
T: +381 24 4758 040  
Borisa Kidriča 76.  
24414 Hajdukovo, Serbia  
[www.osmorco.com](http://www.osmorco.com)